

27 King William St.
Hamilton

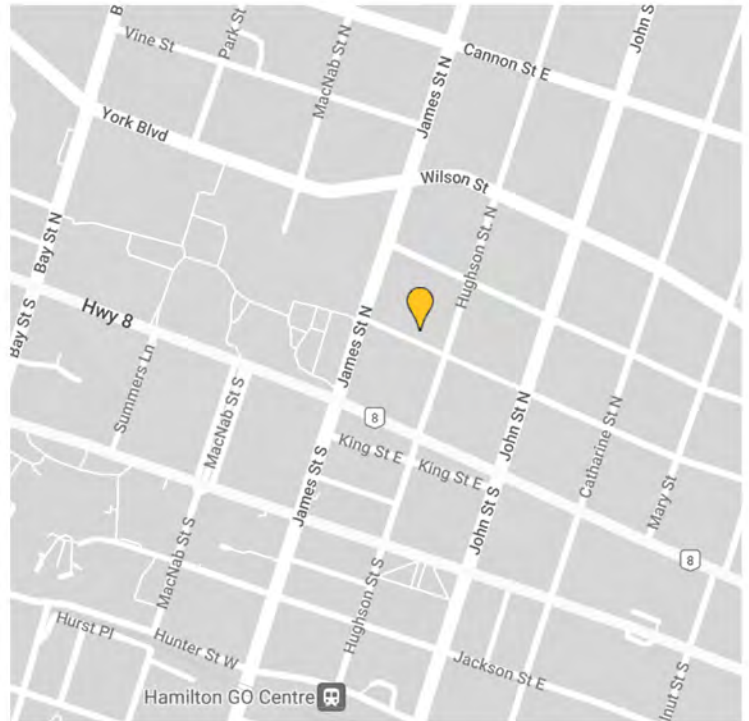
Sky Dragon Community
Development Co-operative



AMENITIES

The Site

The Sky Dragon Community Development Co-operative presents two newly constructed one bedroom residential condominium units on the third floor of the Sky Dragon Centre - a heritage property in downtown Hamilton. Located at 27 King William Street, in the heart of Hamilton's arts, dining, and entertainment district, the property is close to transit and amenities. The units have elevator access and are situated over Relay Coffee Roasters on the ground floor. The building is also home to the Sky Dragon Co-operative's multi-use arts, wellness and community meeting spaces on the second floor. Construction is set to commence in the summer of 2023.



Sky Dragon Community
Development Co-operative

FEATURES

The Finishes

Suite Features:

- Smooth ceilings throughout
- Brick feature wall
- Luxury wood plank vinyl flooring throughout living spaces
- Brushed nickel interior door hardware
- 4" flat cut baseboards and 2" casing
- Insulated double-glazed, vinyl windows
- Pot lights
- In-suite heating/ cooling unit
- Decora switches and outlets
- In-suite smoke alarms as per Ontario Building Code
- Security view hole in suite entry door
- In-suite laundry niche for stackable washer/ dryer

Kitchen Features:

- Premium painted white cabinetry
- 2cm quartz countertops with undermount sinks
- Over the range microwave vented to exterior
- Rough-in for apartment size dishwasher **where space allows*
- Brushed nickel plumbing fixtures

Bathroom Features:

- Shower light
- White plumbing fixtures (ie. toilet, sink)
- Exhaust fan vented to exterior
- 12x12 Porcelain tile floor

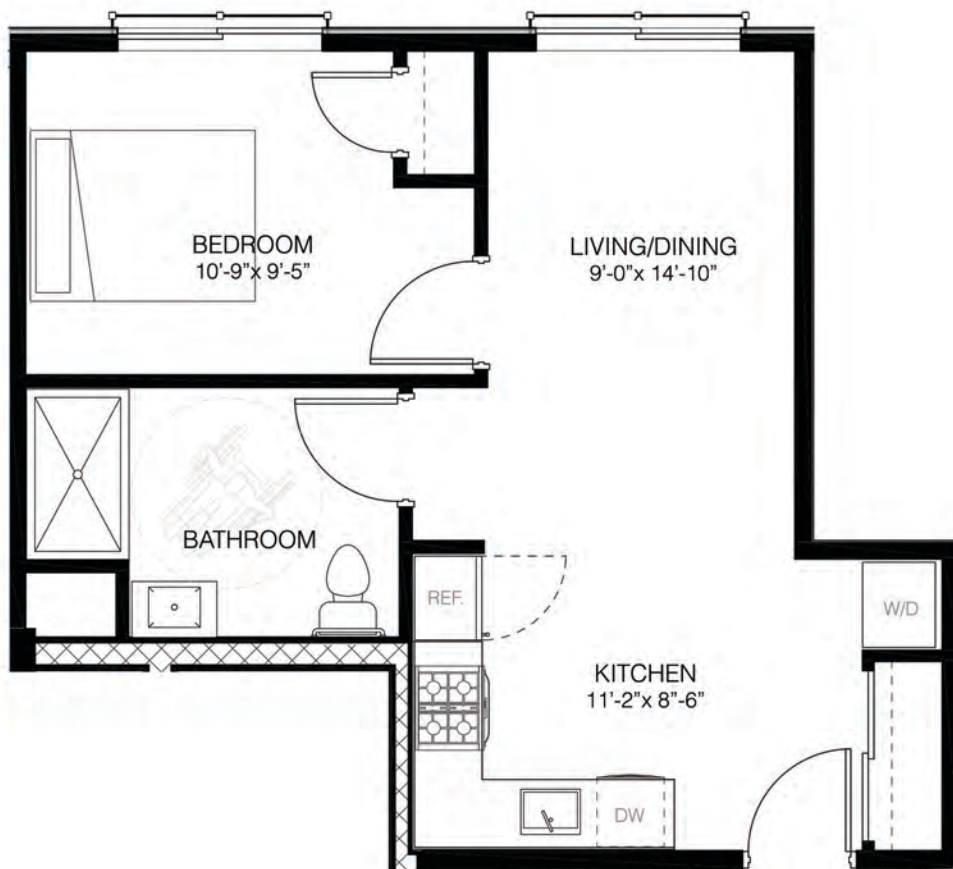


Sky Dragon Community
Development Co-operative

SUITE #2

The Plan

484 ft²
1 Bedroom
\$400,000



*Universally Accessible

Some elements may be modified, which are not detailed on the plan shown and a 2% differential in measurement from the advertised and actual area is acceptable. All dimensions, details, materials, specifications and features can be changed at the sole discretion of the vendor without notice. Certain floor plan options, design elements and finishes may not be possible based on the current stage of construction. All renderings are artistic concepts and may contain options, materials and extras not included with the suite.



Sky Dragon Community
Development Co-operative

SUITE # 3

The Plan

498 ft²
1 Bedroom
\$410,000



Some elements may be modified, which are not detailed on the plan shown and a 2% differential in measurement from the advertised and actual area is acceptable. All dimensions, details, materials, specifications and features can be changed at the sole discretion of the vendor without notice. Certain floor plan options, design elements and finishes may not be possible based on the current stage of construction. All renderings are artistic concepts and may contain options, materials and extras not included with the suite.



**Sky Dragon Community
Development Co-operative**



INQUIRIES

Contact Information

For more information please contact:

 **KEVIN MACKAY**
 (905) 481-4843
 kevin@skydragon.org

Also check out:

 **www.skydragon.org**
 **@Skydragoncentre**



Sky Dragon Community
Development Co-operative